



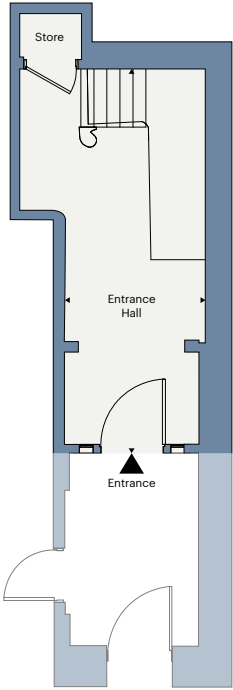
46/2 Melville Street

3 Bedroom

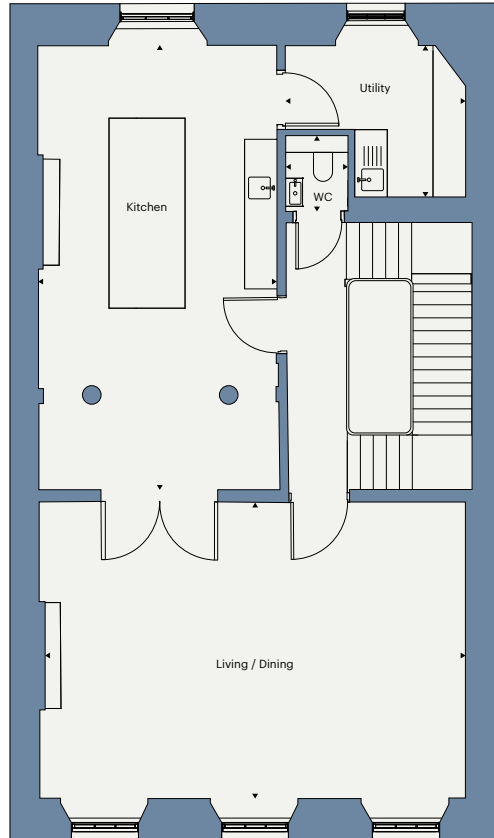
North

227 sq m / 2,443 sq ft

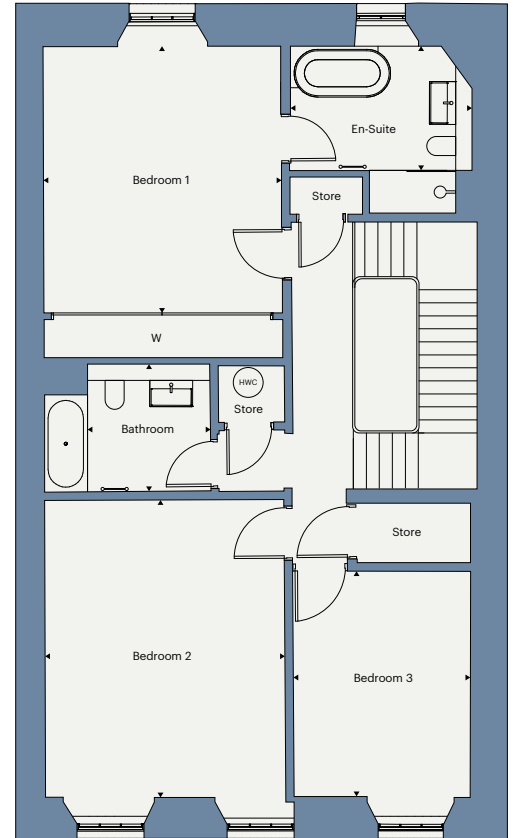
Ground Floor



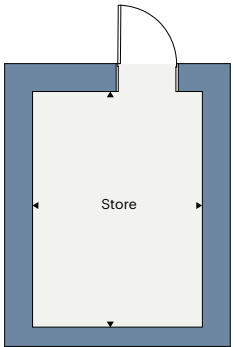
First Floor



Second Floor



Lower Ground Floor



	M	Ft
Entrance Hall	2.58 x 7.07	8' 5" x 23' 2"
Living / Dining	7.74 x 5.45	25' 4" x 17' 10"
Kitchen	4.39 x 8.19	14' 4" x 26' 10"
Utility	3.31 x 2.78	10' 10" x 9' 1"
WC	1.14 x 1.39	3' 8" x 4' 6"
Bathroom	2.26 x 2.34	7' 4" x 7' 8"
Bedroom 1	4.39 x 4.91	14' 4" x 16' 1"
En-Suite	3.34 x 2.28	10' 11" x 7' 5"
Bedroom 2	4.42 x 5.48	14' 6" x 17' 11"
Bedroom 3	3.26 x 4.15	10' 8" x 13' 7"
Store	2.28 x 3.00	7' 5" x 9' 10"



SQUARE & CRESCENT